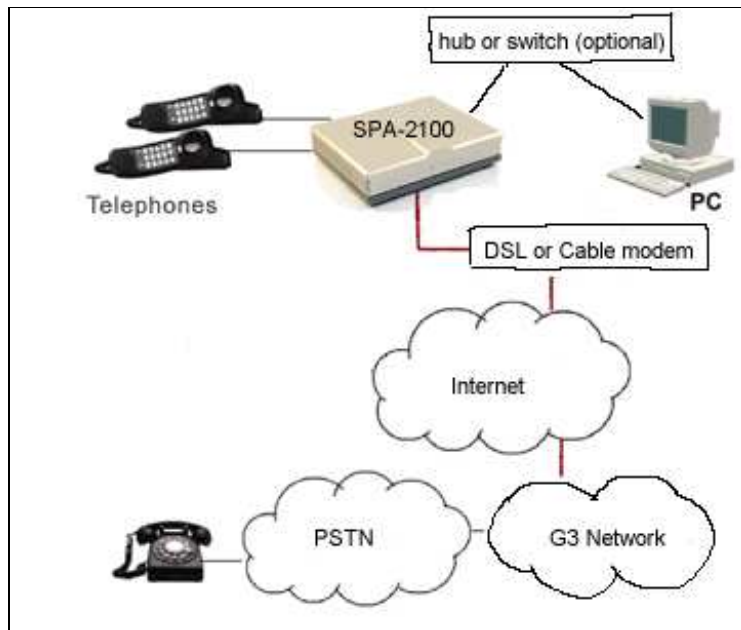


# G3Talk IP Instructions – SPA-2100



## Step 1: Network Installation Requirements

Please check to make sure that you have the following:

- SPA-2100 Voice Over IP Phone Adapter Unit
- Ethernet Cable
- G3Talk IP Instructions – SPA-2100 (this document)
- 5 Volt Power Adaptor

You will also need:

- One or two analog touch tone telephones
- A cable or DSL Modem and the attached ethernet cable
- A computer you will connect to the PC port of the SPA-2100

Connect the Network Devices with Ethernet Cables:

1. Power down all networking devices: Cable/DSL Modem, PC, SPA-2100

**Note:** If you are connecting the SPA-2100 to a local area or home network, connect an Ethernet cable from the WAN port of the SPA-2100 to the LAN port on your network switch/router. Do not connect the SPA-2100 WAN port to an Ethernet hub, as network performance could suffer

2. Connect an Ethernet cable from a PC network card to the SPA-2100 PC port

**Note:** You may also connect an Ethernet switch or hub to the SPA-2100 PC port. It is possible to turn your home Router into Switch. You need to disable DHCP on your home Router. Refer to documentation of your Router.

## Step 2: Telephone Installation

From the Rear of the SPA-2100:

1. Insert a standard RJ-11 telephone cable into the SPA-2100 **PHONE 1** port
2. Connect the other end of the cable to an analog telephone or fax machine
3. Insert a standard RJ-11 telephone cable into the SPA-2100 **PHONE 2** port (Optional)

**Note:** Do not connect RJ-11 telephone cable from the SPA to the wall jack to prevent any chance of connection to the circuit switched telco network.

You may now insert the plug end of the power adaptor into a live power outlet which will power up the SPA-2100. At this time, you may now power on the DSL/Cable modem and the PC connected to the SPA-2100 LAN port.



RJ-11 RJ-11 RJ-45 RJ-45  
to telephone to DSL/Cable to PC  
or fax modem (or hub/switch)

## Step 3: PC Configuration

Configure a PC that will connect to the Internet via the SPA:

1. Open the "Local Area Connection" settings menu of the PC.
  - Windows XP: "Start-Settings-Control Panel-Network Connections"
  - Windows 2000: "Start-Settings-Control Panel-Network and Dial-up Connections"
  - Windows 95, 98, ME: "Start-Settings-Control Panel-Network"
2. Select "Local Area Connection". An "Item List" will be visible in the window. Select the "Internet Protocol (TCP/IP)" line item applicable for the Ethernet Adapter used to connect the SPA-2100

**Note:** Do not choose a TCP/IP settings associated with AOL, VPN, PPPoE or Dial-up. If there is no TCP/IP entry, refer to the PC Ethernet adapter installation documentation to install TCP/IP on the PC

3. Select the "Properties" button
4. Select the IP Address configuration tab and select "Obtain an IP address automatically"
5. Select "OK" on the TCP/IP "Properties" screen and select "OK" on the "Network" screen; restart the PC

## Step 4: Network and Service Configuration

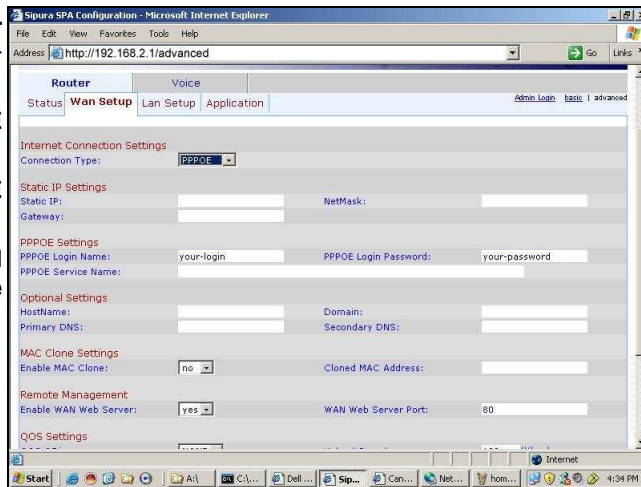
Open a web browser and enter `http://192.168.2.1/advanced/` into the Address field and press the *Enter* key.

With the **Router** menu active, select the **WAN** tab to expose the WAN configuration page of the SPA-2100.

Follow the instructions below depending on the method by which the SPA-2100 will connect to the Internet:

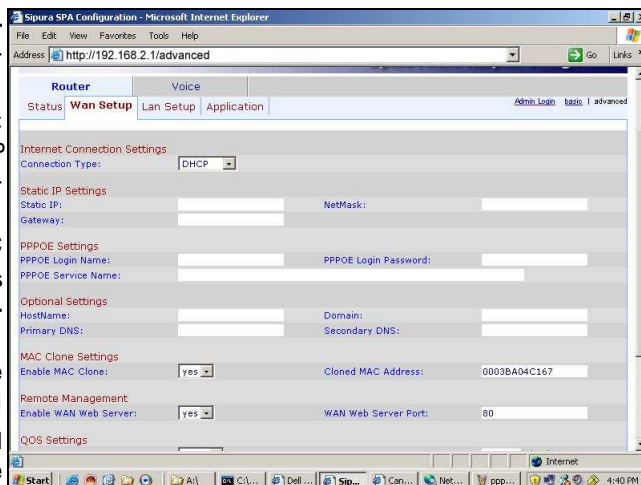
### A. Connecting to your DSL ISP via PPPoE

1. Select **PPPoE** as the **Connection Type** in the Internet Connection Settings area of the web page
2. Enter the user name in the **PPPoE Login Name** field
3. Enter the password in the **PPPoE Login Password** field
4. Select the **Submit All Changes** button to save the settings



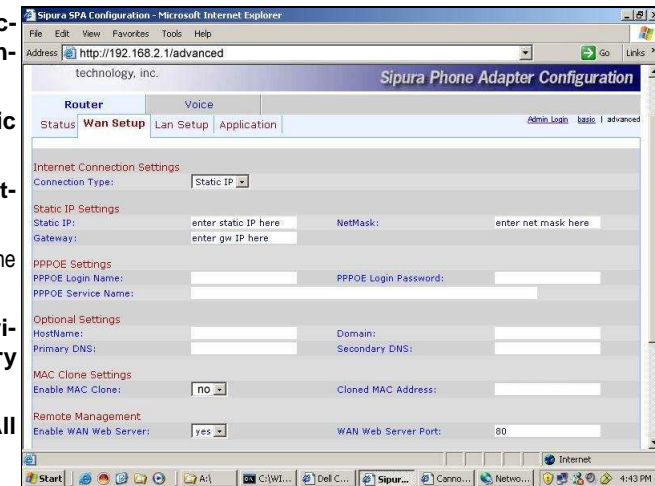
### B. Connecting to your Cable ISP via DHCP (obtain an IP Address automatically)

1. Select **DHCP** as the **Connection Type** in the Internet Connection Settings area of the web page.
2. You may need to configure **MAC Address Spoofing** if the ISP requires that a specific MAC address be used with their service:
  - obtain the MAC Address of the PC
  - in the **MAC Clone Settings** section of the web page, set **Enable MAC Clone** to **yes**
  - enter the MAC Address in the **MAC Address Spoofing** field
3. Select the **Submit All Changes** button to save the settings.



### C. Connecting via a Static IP Address

1. Select **Static IP** as the **Connection Type** in the Internet Connection Settings area
2. Enter the IP address in the **Static IP** field
3. Enter the subnet mask in the **NetMask** field
4. Enter the default gateway in the **Gateway** field
5. Enter the DNS server in the **Primary** and (optional) **Secondary DNS** field
6. Select the **Submit All Changes**



## SPA Compliance and Safety Information

This equipment has been tested and found to comply with the limits for a Class B digital device in accordance with the specifications in part 15 of the FCC rules. This product bears the CE Marketing indicating compliance with the 89/336/EEC directive.

Standards to which conformity is declared: *EN61000-4-4:1995, EN61000-4-3:1997, EN61000-4-4:1995, EN61000-4-5:1995, EN61000-4-6:1996, EN61000-4-8:1994, EN61000-4-11:1994, EN61000-3-2:2001, EN61000-3-3:1995 & EN55022:1998 Class B*

Modifications to this product not authorized by Sipura Technology could void FCC approval, terminating end user authority to use this product.

### For indoor use only.

Read installation instructions before connecting to a power source. The electric plug and socket must be accessible at all times as this is the main method to disconnect power from the device.

### Shock Hazard:

- Do not operate near water or similar fluid
- Do not work with this device during periods of lightning activity
- Do not touch the phone wires at the end of cables within sockets